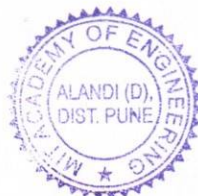


MIT Academy of Engineering

Research and Development Cell

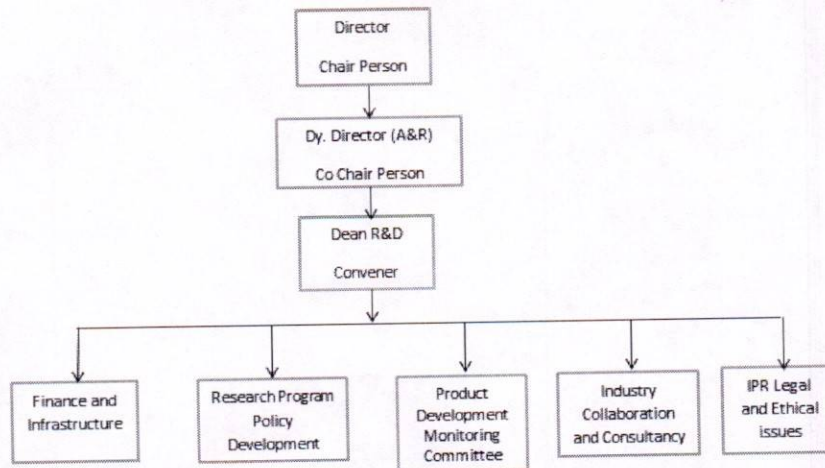
Alandi(D) Pune

April 2023



1. Governance

The organization structure of Research and Development Cell has four committees viz: Finance and purchase, Research Program Policy Development, Industry Collaboration and Consultancy and IPR, Legal and Ethical matters. The organization structure is as follows:



2. Research Ecosystem/Collaboration

A vibrant research ecosystem in Institute aims to provide meaningful thrust for sustainable research and innovation and promote collaboration between government, universities, research institutes and industries.

Research & Development Cell acts as a facilitator for networking and collaborative research with other national and international institutions working in interdisciplinary, trans-disciplinary, and multidisciplinary research areas.

Research & Development Cell envisages to strengthen resource sharing in content and infrastructure both within the university, funding agencies, industries, corporate and government.

3. Information Management System

Institute is configuring its database on Indian Research Information Network System (IRINS). Institute disseminates its Research and Development Policies through Institute Website. The Research outcomes in the form of Research Publications, IPR are disseminated through Institute Website.



4. Human Resources

Dedicated leadership and administrative structure for research, led by experienced researchers, for establishing an effective and robust Research Governance in RDC.

Sr. No.	Name of the Member	Profile	Designation
1.	Dr. Mahesh Goudar	Director	Chairman
2.	Dr. Sunita Barve	Deputy Director (Academics & Research)	Co-Chairman
3.	Dr. Prafulla Hatte	Dean R&D	Member Secretary
4.	Dr. Mahesh Joshi	Sr. Asst Professor, School of Mechanical Engineering	Member
5.	Dr. Aniket Gundecha	Associate Professor, School of Electrical Engineering	Member
6.	Dr. Sandeep Pande	Sr. Asst. Professor, School of Computer Engineering & Technology	Member
7.	Dr. Parag Sutar	Assistant Professor, School of Chemical Engineering	Member
8.	Dr. Pooja Verma	Assistant Professor, School of Humanities & Engineering Sciences	Member
9.	Dr. Sushilkumar Magade	Associate Professor, School of Civil Engineering	Member
10.	Mrs. Apoorva Gijare	Assistant Professor, School of Design	Member

5. Research Promotion & Guidance

Research promotion activities at MITAOE aligned with the mandates of various National Missions, SDGs, Start-up India leading to a Self-Reliant India (Atma-Nirbhar Bharat).



a. Research Policies:

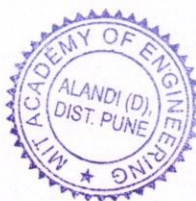
Institute has Research and Development policies well in place. These policies are faculty/staff and students centric. Policies are framed in such a way that they are inclusive and accommodative with an intent to motivate and support research activities. The research policies are framed, discussed and deliberated by R&D Cell by taking into consideration of various requirements of stakeholders. The Policies are further presented in College Development Committee / Governing Council for approval.

- i. *Research and Development Manual*: Research and development manual provides guidelines for various research activities such as Information of various funding agencies, DRC/RRC of Research manuscript, Research proposal and IPR, Seed money, Purchase from Research sanctioned grants.
- ii. *IPR Policy*: IPR policy provides the guidelines for evaluation of IPR, Ownership of IPR, Revenue and Shares and Conflict of interest.
- iii. *Consultancy Policy*: Consultancy policy provides the information of types of consultancy work and Revenue sharing.
- iv. *Code of Ethics for Research Publication and Plagiarism*: The scope of this policy document is to define Authorship, various forms of Plagiarism, Misrepresentation and Falsification of content in different forms viz: Journal articles, audio-video content, web posting, technical report, conference articles, books, books chapters and other form of scholarly and professional information.

b. Research forefront areas

Every school has identified three to four thrust areas where in Faculties and students conduct research. Each forefront area has Professors, Associate Professors, and Assistant professors of respective forefront areas. Each forefront area identifies problem statement and shares with students' group for finding innovative solutions. Senior faculty members of the forefront areas mentor the budding faculties and students regarding research paper writing, funding proposals and IPR.

Research and Development cell put its endeavors in building the capacity of faculty



and students to undertake research problems in line with the latest advances in diverse disciplines to push the boundaries of knowledge through publications and contribute to technological developments relevant to societal need

c. Research Incentives and Recognition

Institute has well curated Research and Incentive Scheme to motivate faculties who have outperformed in research. Faculties are given additional increments for their performance in the said assessment year. This helps to build a unique Research career ladder for strengthening mission "Research". Faculties are felicitated on various platform in institute to boost their morale from research perspective.

Faculties who complete their PhD during their service at MIT Academy of Engineering are entitled to get three additional increments after submission of their PhD completion certificate.

Institute awards Post Graduation scholarship to full time GATE qualified students to motivate them to undertake research.

d. Technology Development and Business Centered Facility

Institute has full-fledged Entrepreneurship Cell to build strategic partnerships/ collaborations, industry-institute interface, venture capital, trade/market portfolio, technology transfer, and commercialization of research to facilitate innovation, incubation, entrepreneurship and start-up ventures.

e. Financial Support

Institute Research and Development Cell facilitates resource mobilization and creates corpus for research and development from government industry, and other funding agencies furtherance of research activities. Institute year marks fund to support various research activities such as Registration fees for National/International conferences, IPR, Organizing Conferences and seed money.

f. Research Mentorship :

Research and Development cell conducts Research Mentorship Programs to create awareness amongst faculty, staff and students about requirements of Research paper,



Research proposal and IPR as follows:

1. How to Write Quality Research Paper
2. Information about various National /International funding agencies
3. Various form of Intellectual Property Rights
4. Handholding sessions for drafting Invention

6. Integrity and Ethics

Research and Development Cell ensures that researchers understand the importance of integrity and ethics and comply with ethical codes of research and publishing practices at institutional, national, and global levels through its “Code of Ethics for Research and Publications policy”

A standard similarity check software “Turnitin” is implemented and the requisite software in this regard made accessible to all researchers. In addition, the Research and Development Cell sensitizes the research community about dubious research and publishing practices and predatory journals.

Ethics Committee:

As per UGC (Promotion of Academic Integrity and Prevention of Plagiarism in Higher Educational Institutions) Regulations 2017, Institute had constituted Academic Misconduct Panel (AMP) and Plagiarism Disciplinary Authority (PDA).

Academic Misconduct Panel (AMP):

Academic Misconduct Panel consist of four members who shall be senior academicians with good publication record with at least one member nominated by Head of Institution from outside institution. Chairman of AMP shall be School Dean (School in which plagiarism is alleged). The third member shall be reputed academician from discipline in which the plagiarism is alleged. The fourth member shall be an expert well versed with anti-plagiarism tools.

1. AMP shall send the report after investigation and recommendation on penalties to be imposed to PDA preferably within 45 days from the date of complaint/initiation of proceedings in case of sou-moto notice.
2. AMP shall provide a copy of the report to person against whom the inquiry report



is submitted.

Sr. No.	Name of the Members	Profile	Designation
1	Dr. Abhijeet Malge, Dr. Shyam Shukla, Dr. Dipti Sakhare, Dr. Sandeep Shewale, Dr. Vaishali Wangikar, Dr. Rajeshwari Goudar, Mr. Avinash Bhalerao	School Dean from discipline in which plagiarism is alleged	Chairman
2	External Member	External Member appointed by Head of Institute	Member
3	Dr. Sandeep Pande, Dr. Mahesh Joshi, Dr. Sushilkumar Magade, Dr. Aniket Gundecha, Dr. Parag Sutar, Mrs Apporva Gijare, Dr. Pooja Verma	School R&D Coordinator in which plagiarism is alleged	Member secretary
4	Mrs. Vandana Khandelwal	Librarian	Member

Plagiarism Disciplinary Authority (PDA):

1. PDA consist of three members committee which is chaired by Director. The other members are Dean-R&D and one senior academician not below the tank of Professor.
2. PDA will receive the recommendations from AMP and take appropriate decision.
3. The decision of DA will be final and binding.

PDA Committee Details:



Sr. No.	Name of the Members	Profile	Designation
1	Dr. Mahesh Goudar	Director	Chairman
2	Dr. Sunita Barve	Deputy Director: Academics & Research	Member
3	Dr. Prafulla Hatte	Dean R&D	Member Secretary

7. Research Monitoring

MIT Academy of Engineering Research and Development Manual formulates and adheres to specific quality benchmarks for research to meet the global/ international standards.

The machinery to monitor the quality of research work is well in place and it executes as follows:

A. Department Review Committee (DRC):

1. Students Publication (Conference/Research Publications):

The DRC committee is formulated to specially oversee the research manuscript/proposals by Faculty and Post Graduate dissertations at department level.

The DRC shall comprise of:

1. School Dean
2. School R&D Coordinator
3. Two faculty expert (Selected by School Dean)

2. Students Patents:

In case of patents applications, DRC comprise of School Dean and School R&D coordinator to maintain confidentiality of innovative idea.

3. Faculty Publication (Conference/Research Publications):



The DRC committee is formulated to specially oversee the research manuscript/proposals by Faculty and Post Graduate dissertations at department level.

The DRC shall comprise of:

1. School Dean
2. Dean R&D
3. School R&D Coordinator
4. Two faculty expert (Selected by School Dean)

4. Faculty Patents:





In case of patents applications, DRC comprises of School Dean and School R&D Coordinator to maintain confidentiality of innovative idea.

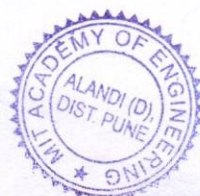
B. The Research Review Committee (RRC)

The RRC committee is formulated to specially oversee the research proposal of Faculty, Staff and Post graduate dissertations. The RRC shall comprise of,

1. Dean R&D
2. School Dean(Concern School)
3. R&D Coordinator(Concern School)
4. PG Coordinator (only for PG projects)
5. Subject Expert /s(Invited by Dean R&D)

In case of patents applications, RRC comprises of Dean R&D and IPR coordinator to maintain the confidentiality of innovative idea.

Prepared By	Verified By	Reviewed By	Approved By
			
Dean R & D	Deputy Director (AR)	Registrar	Director



DIRECTOR
MIT Academy of Engineering
Alandi (D.), Pune-412 105.