

6.2.3 - Implementation of e-governance in areas of operation:

1. Administration
2. Finance and Accounts
3. Student Admission and Support
4. Examination



Dr. Mahesh D. Goudar
Director
MIT Academy of Engineering
Alandi (D) Pune - 412105

Implementation of e-governance in areas of operation:

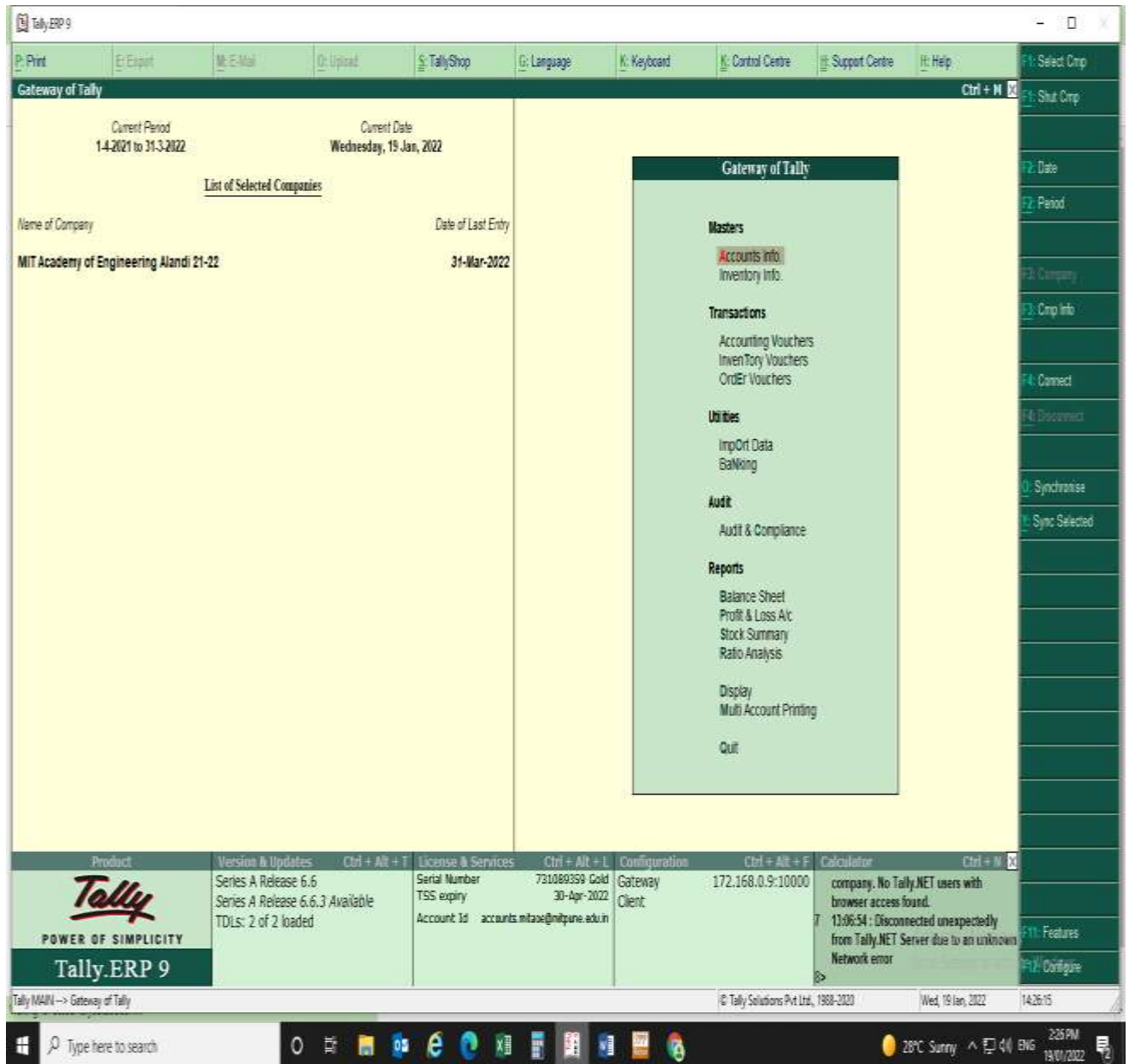
Administration

Biometric attendance Marking System



Finance and Accounts

Screenshot of Tally software



For Pay slip and Income Tax Return

Saral Paypack Software (Relyon Softak Ltd)

The screenshot displays the Saral PayPack software interface. The title bar indicates the file path: MIT ACADEMY OF ENGINEERING (MAHARASHTRA ACADEMY OF ENGINEERING COLLEGE) - Saral PayPack v15.00; Fix - 5 [Premium] : C:\RelyonSoft\Saral PayPack\Data\MAEALANDL. The menu bar includes: File, Initial Settings, Master, Attendance, Pre Salary Transactions, Salary Transactions, Import / Export, TDS Details, Report, Tools, Utility, Registration, Help, Contact Us, Quick Start. The toolbar contains: New Month, Employee, Leave Tracking, Leave Summary, Advance, Salary Editor, Status Reports, Pay Slip, Backup, What's New, and Exit. The main window features a sidebar with navigation options: Summary, Gen. Email, Emp. Profile, B'Day/Anniv., LEAVE, Service Info, DOJ, DOL, Prob.Comp, Conf. Info, Resign.Info, CCSummary, Attribution, Classf. Info, Last Backup, Event Cal., License Info, Connected Users (1), and Saral Mag. The main area shows the Saral PayPack logo with the tagline 'The Complete Payroll Solution' and 'Outstanding - Speed... Performance... Accuracy'. A central graphic depicts a stylized Indian Rupee symbol with components labeled: Basic, HRA, EPF, Gratuity, LTA, and Medical Insurance. The Relyon logo is present with the text 'Developed by Relyon Softech Ltd., Bangalore'. A 'Take Note!' icon is in the top right. The bottom left corner has an information icon. The bottom right corner shows a 'Short Key' list: << Quick, F3, F4, F6, F7, F8.

Student Admission and Support

Ion CUDOS Software for Admission management

The image displays two screenshots of the Ion CUDOS software interface. The top screenshot shows the login page with a background image of a building and palm trees. A login form is overlaid, featuring the MIT Academy of Engineering logo, a 'Sign in to start your session' prompt, and input fields for 'Email' and 'Password'. A blue 'Sign In' button is located below the password field.

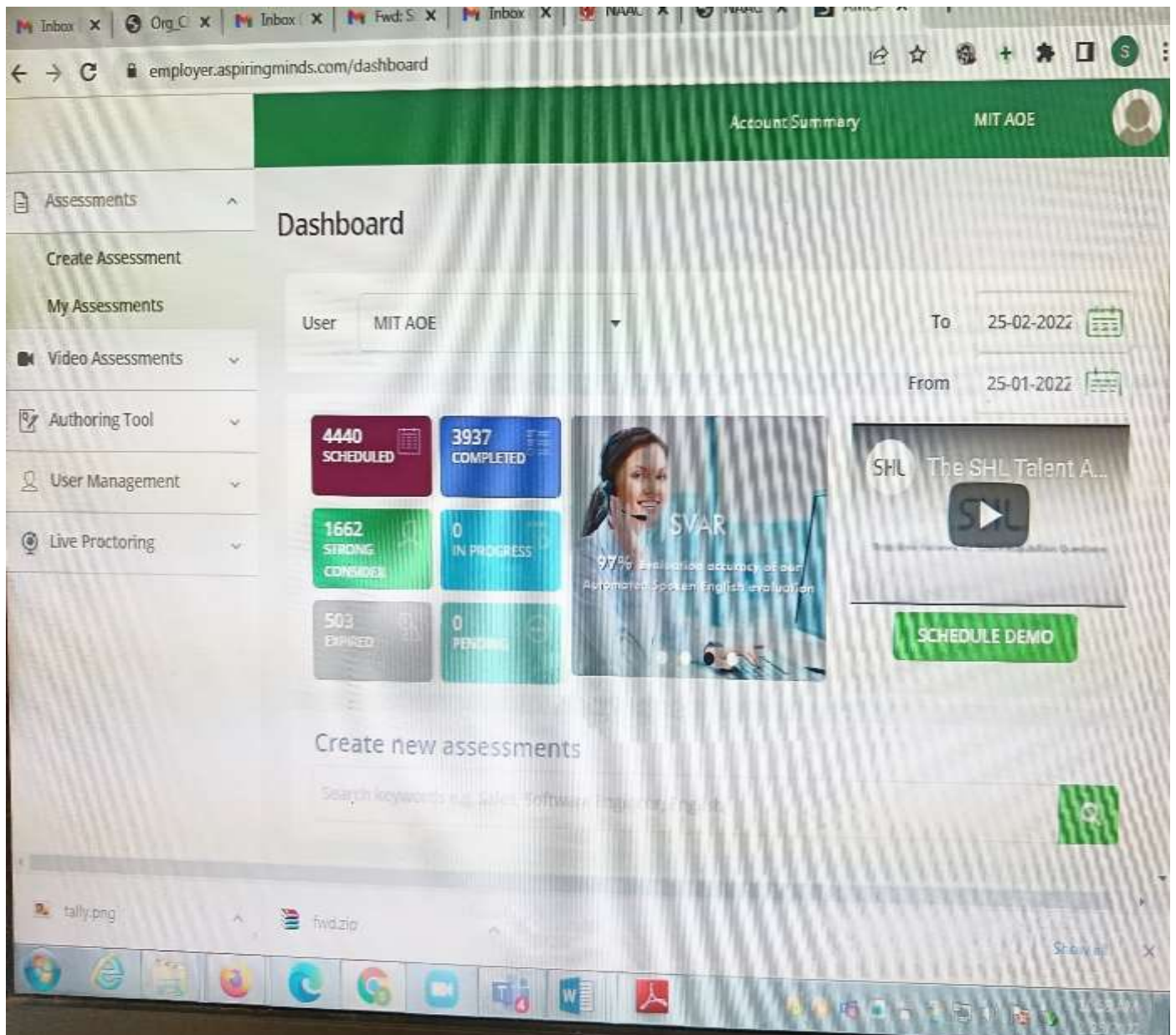
The bottom screenshot shows the 'Admin Panel' on the left side of the interface. The main content area is titled 'Edit Student Application' and contains a 'Personal Information' form. The form fields are as follows:

Personal Information			
Student Name (As per SSLC marks Card)*	Gonwalkar Parth Sant	Gender*	Male <input type="text"/>
Mobile*	9434152123	DOB*	14/01/2002
Mother Tongue	Marathi	Email*	pragwalkar@mitaoe.ac
Nationality*	Indian	Blood Group	B+ve <input type="text"/>
Birth Place	Nanded	Emergency Person	
Cast*	ETC <input type="text"/>	Religion*	Maharashtra <input type="text"/>
Author No.	91196068175	Physically Challenged*	No <input type="text"/>
PAH No			

The form also includes a 'Religion*' dropdown menu with 'Hindu' selected and an 'Emergency Phone' field.

Examination

AMCAT –Aspiring Minds portal for Online Examination



- Assessments ^
- Create Assessment
- My Assessments
- Video Assessments
- Assessments Authoring
- Tool User
- User Management
- Live Proctoring

Dashboard

User To
From

4440 SCHEDULED	3937 COMPLETED
1662 STRONG	0 IN
503	0



The SHL Talent Acquisi...







Contact us to schedule a live demo session

Create new assessments



Candidate Statistics +

			
ADD TESTS TO ASSESSMENT	CONFIGURE ENVIRONMENT	SET SHORTLIST CRITERIA	SCHEDULE ASSESSMENT

© 2022 SHL and its affiliates. All rights reserved.