

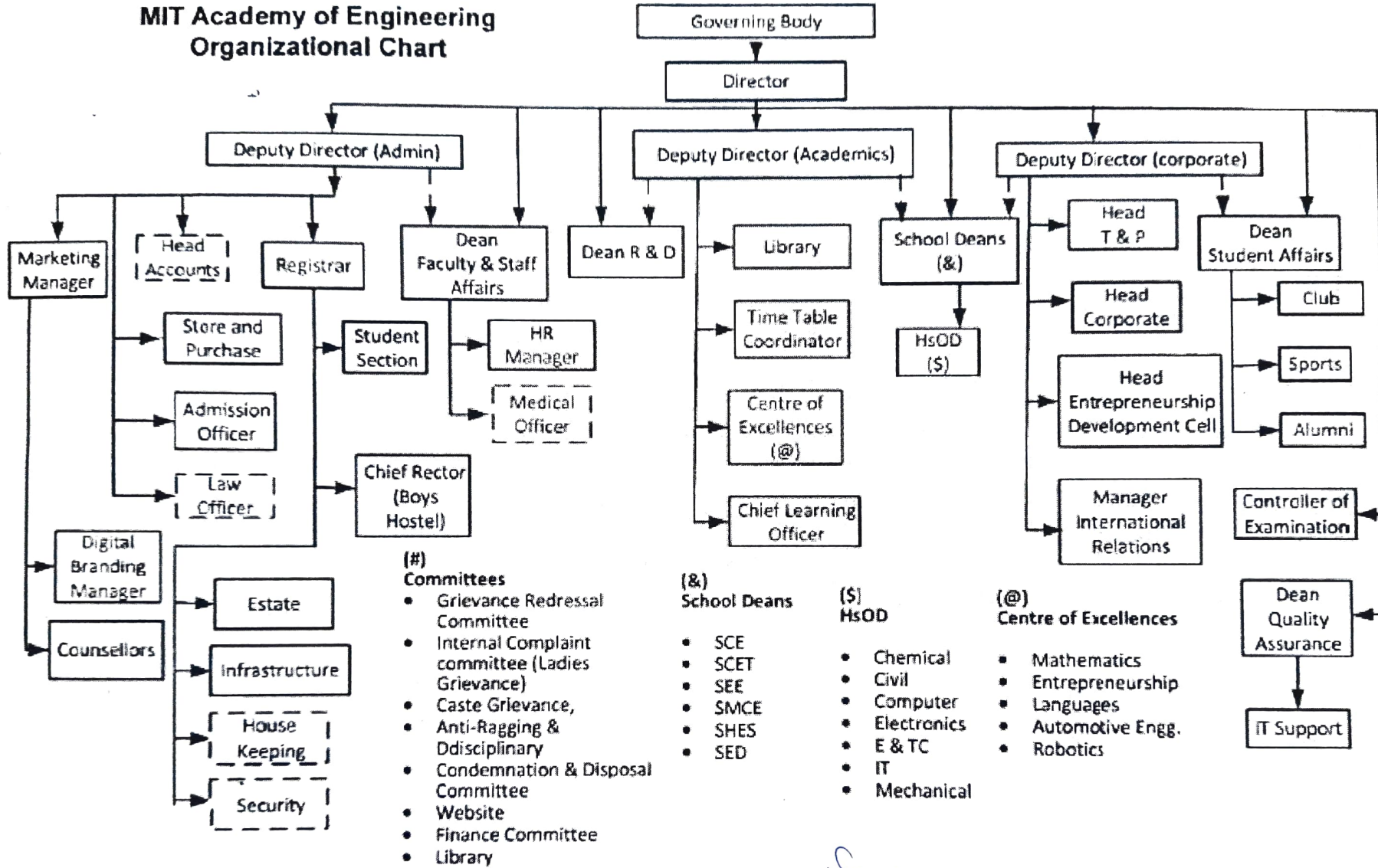
6.2.2 - The functioning of the various institutional bodies is effective and efficient as visible from the policies, administrative set-up, appointment and service rules, procedures, etc.



Dr. Mahesh D. Goudar  
Director  
MIT Academy of Engineering  
Alandi (D) Pune - 412105



# MIT Academy of Engineering Organizational Chart



SCE: School of Chemical Engg., SED: School of Engg. Design  
 SCET: School of Computer and Engineering Technology (Computer & IT)  
 SEE: School of Electrical Engineering (E&TC and Electronics)  
 SMCE: School of Mechanical and Civil Engg.,

Prepared By:  
Dean QA

Recommended By:  
Director

Rev 9.0 - 15/10/2020

*[Signature]*  
**DIRECTOR**  
 MIT Academy of Engineering  
 Alandi (D.), Pune-412 105.