

Student Satisfaction Survey 2018-19

The student satisfaction survey was presented by Dean Academics on 12th April in the IQAC meeting. The following action point was taken to fulfill the needs of students.

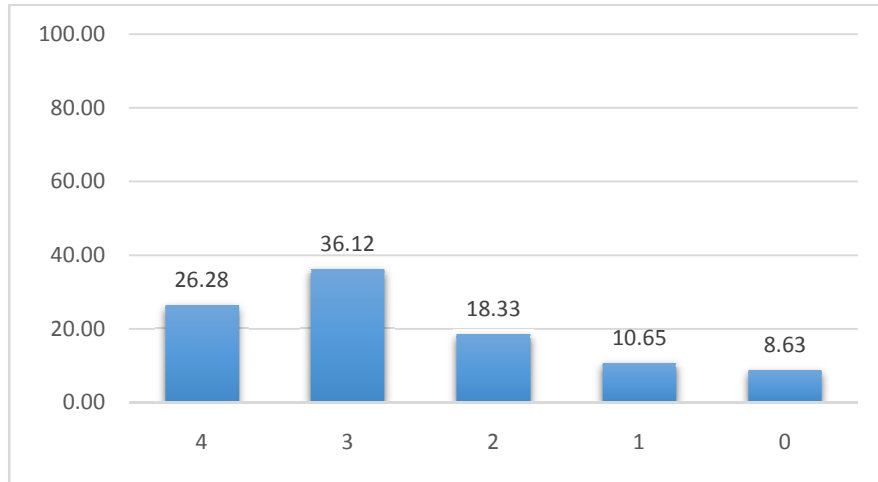
It was decided to focus on the low rating areas given by the students. The same will be communicated to all the stakeholders of the institute to improve the ratings in the forthcoming academic years. Mostly the areas like inculcation of life and employability skills, the use of multimedia while teaching, social and emotional growth had a low rating. Hence, the efforts will be taken to improve on them by taking the necessary steps from all the stakeholders. The detailed analysis of the survey is given below for the reference of all the stakeholders.

Note:

- **Y-axis** indicates No. of students participated in %
- **X-axis** indicates rating

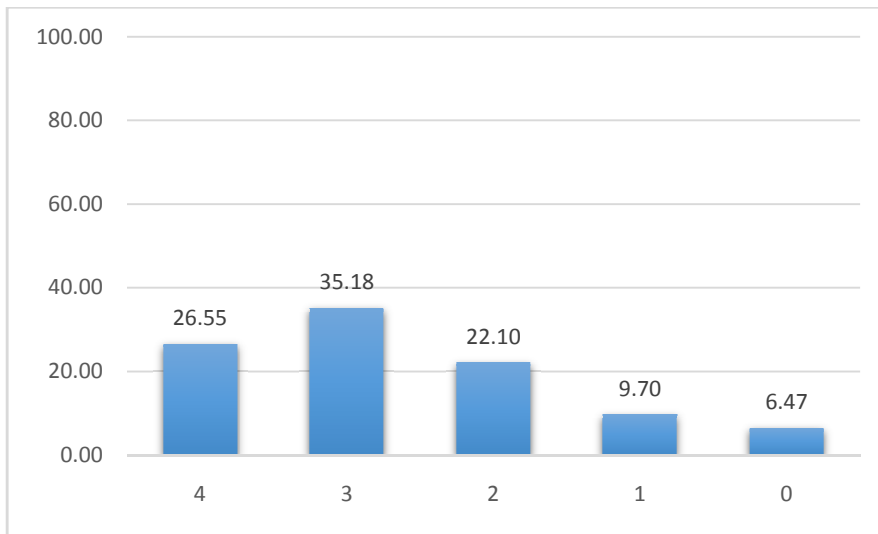
1. Efforts are made by the institute/ teachers to inculcate soft skills, life skills and employability skills to make you ready for the world of work.

4 – To a great extent, 3 – Moderate, 2 – Somewhat, 1 – Very little, 0 – Not at all



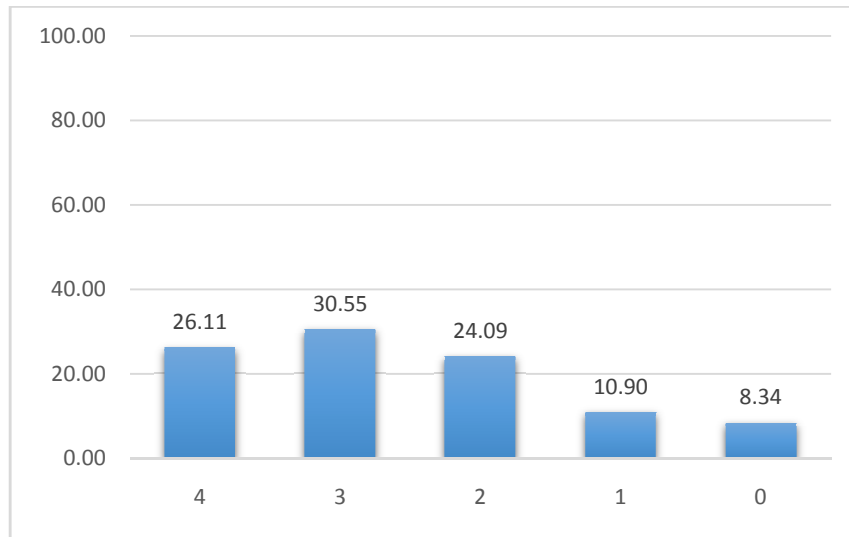
2. What percentage of teachers use ICT tools such as LCD projector, Multimedia, etc. while teaching?

4 – Above 90%, 3 – 70 – 89%, 2 – 50 – 69%, 1 – 30 – 49%, 0 – Below 29%



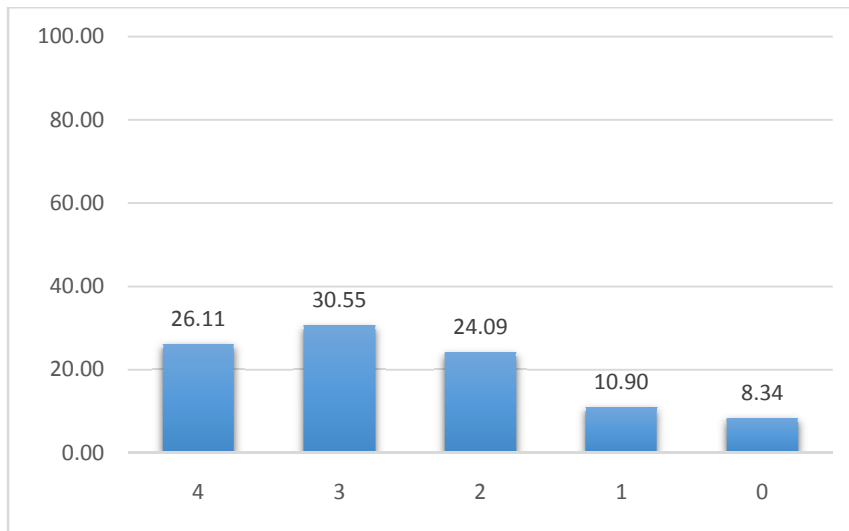
3. Your mentor does a necessary follow-up with an assigned task to you.

4 – Every time 3 – Usually 2 – Occasionally/Sometimes 1 – Rarely 0 – I don't have a mentor



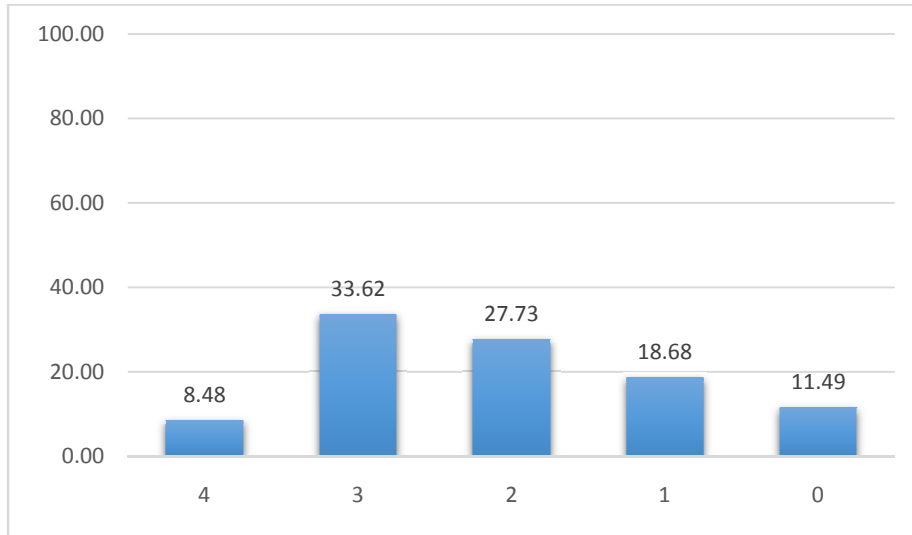
4. The institution makes effort to engage students in the monitoring, review and continuous quality improvement of the teaching learning process

4 – Strongly agree, 3 – Agree, 2 – Neutral, 1 – Disagree, 0 – Strongly disagree



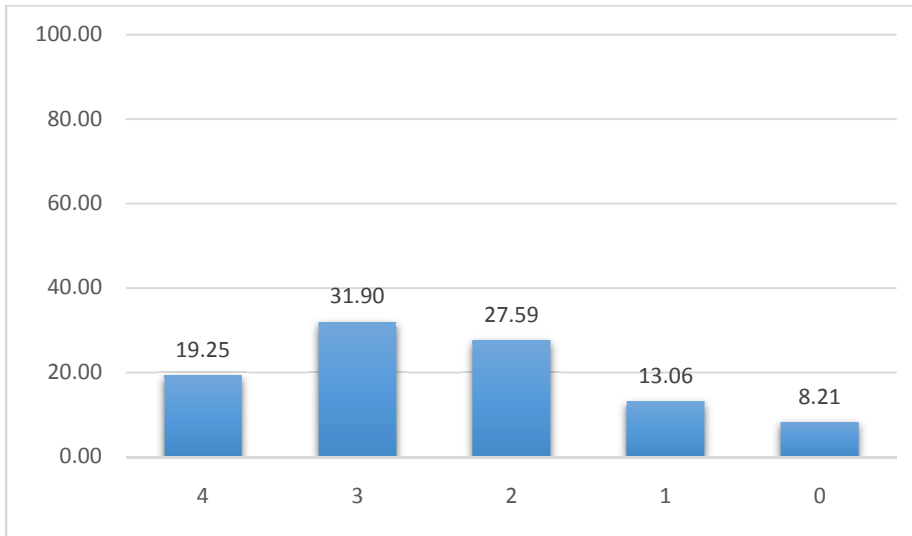
5. The overall quality of teaching-learning process in your institute is very good

4 –Strongly agree, 3 – Agree, 2 – Neutral, 1 – Disagree, 0 – Strongly disagree



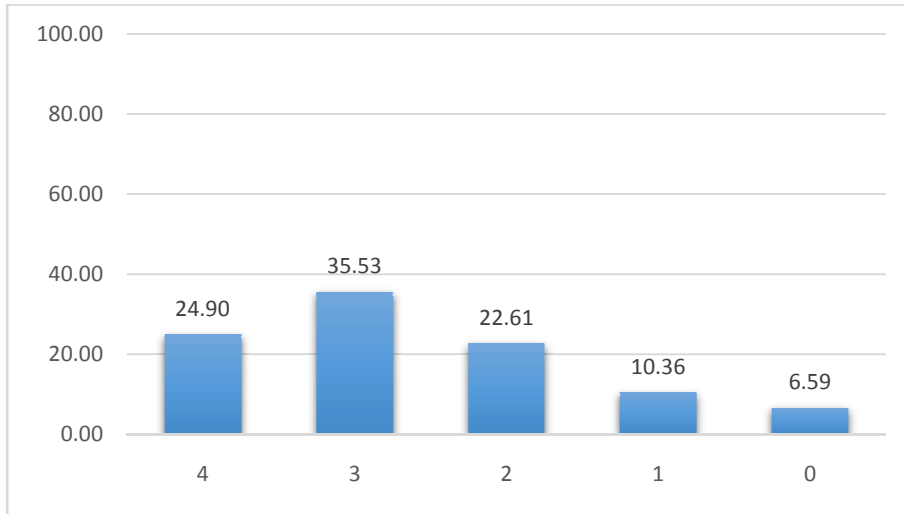
6. The teaching and mentoring process in your institution facilitates you in cognitive, social and emotional growth.

4 – Significantly, 3 – Very well, 2 – Moderately, 1 – Marginally, 0– Not at all



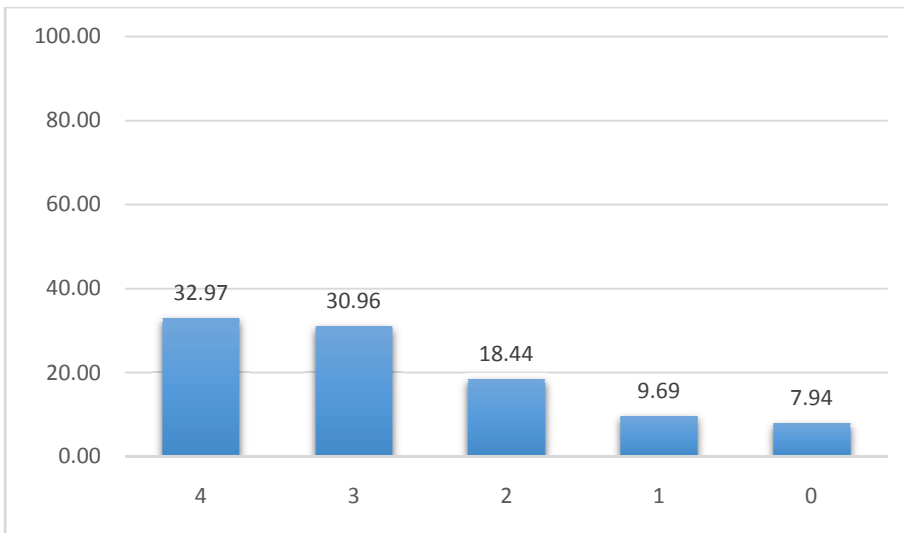
7. The institution provides multiple opportunities to learn and grow.

4 – Strongly agree, 3 – Agree, 2 – Neutral, 1 – Disagree, 0– Strongly disagree

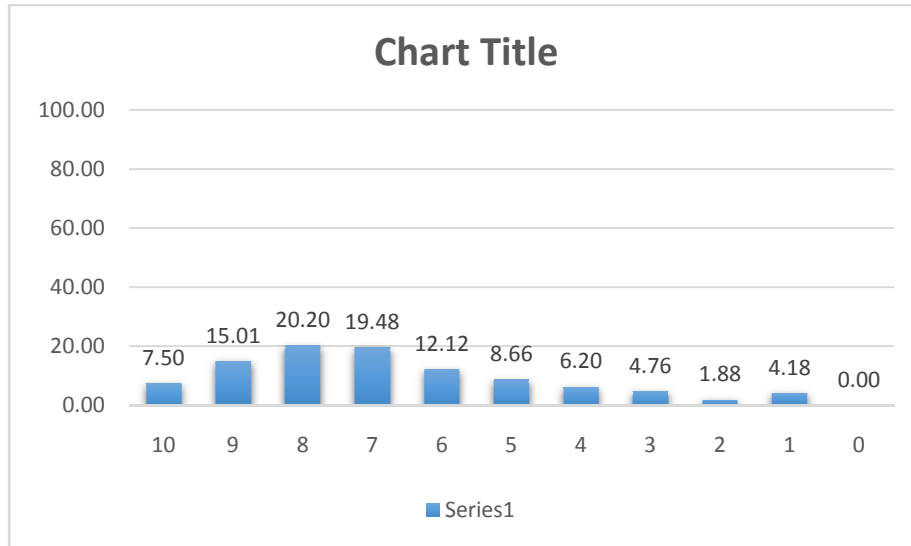


8. The institute takes active interest in promoting internship, student exchange, field visit opportunities for students.

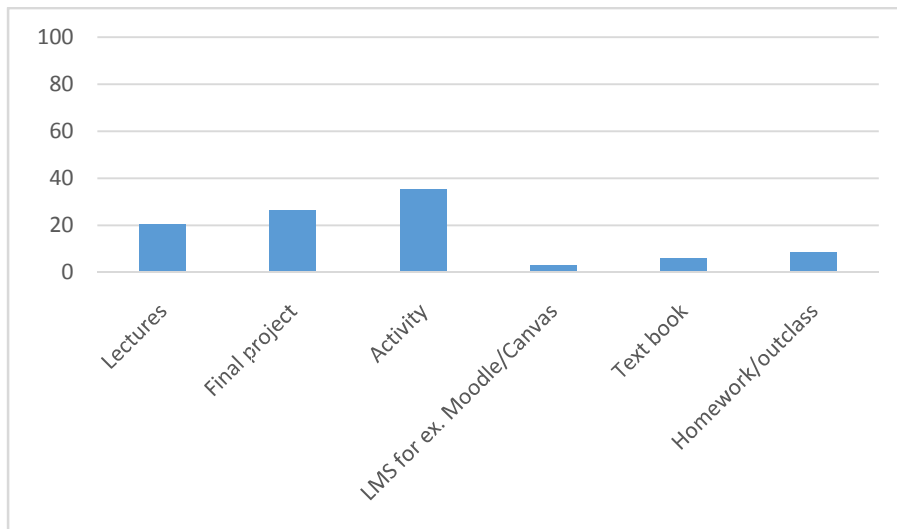
4 – Regularly, 3 – Often, 2 – Sometimes, 1 – Rarely, 0– Never



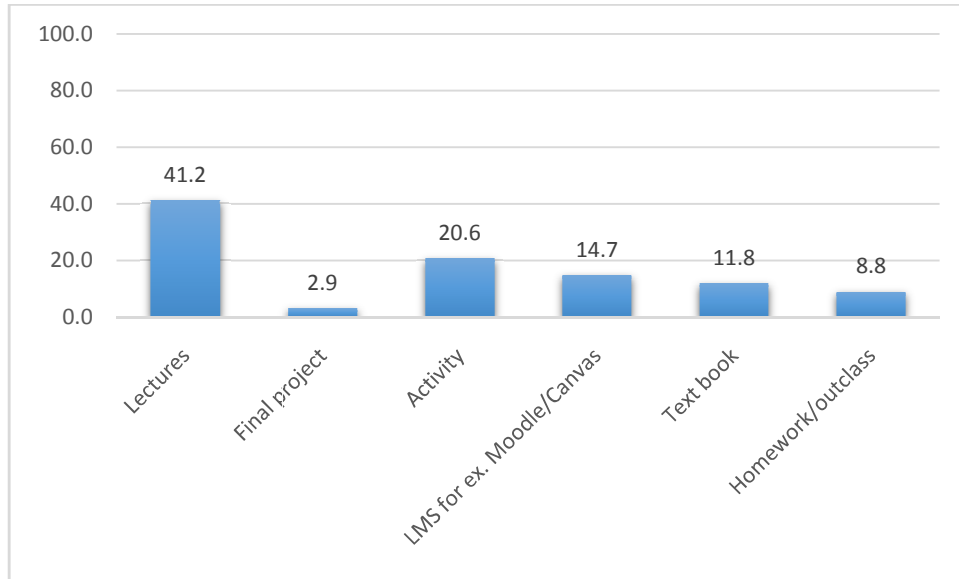
9. Would you recommend learning-teaching of your school (on a 1-10 scale?)



10. What you liked the most amongst mentioned courses? *

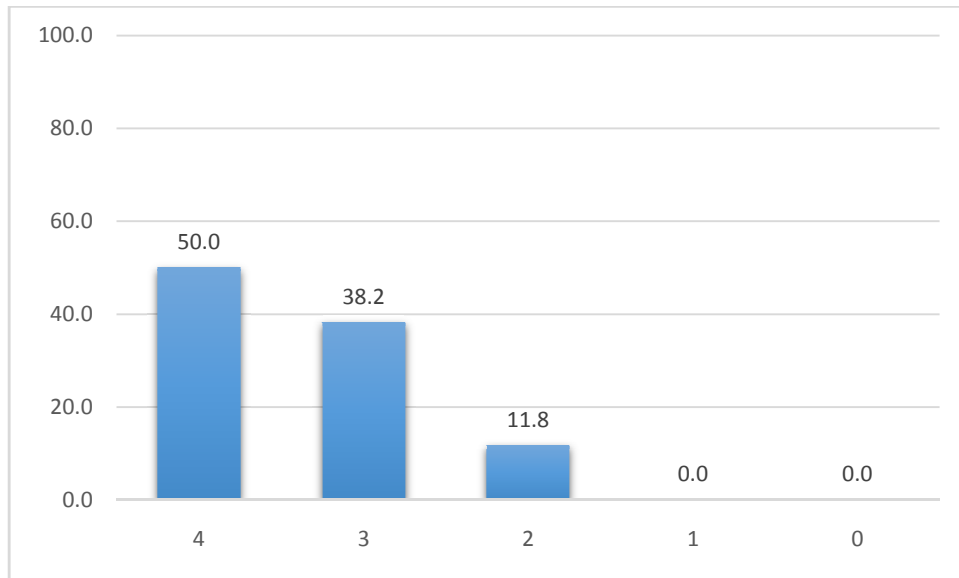


11. Which was the least favorite part of the course? *



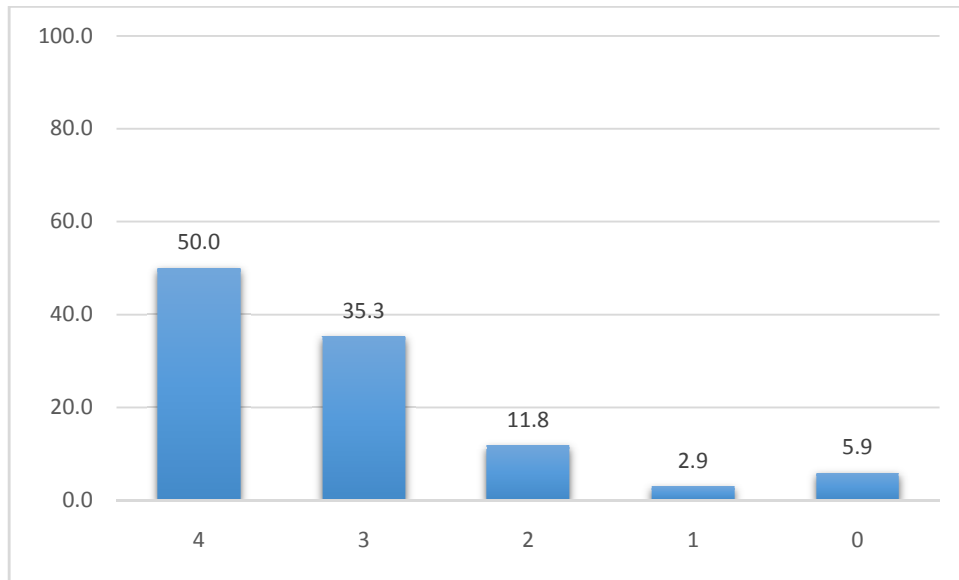
12. How much of the syllabus was covered in the class? *

4 – 85 to 100% , 3 – 70 to 84% , 2 – 55 to 69% , 1– 30 to 54%, 0 –Below 30%



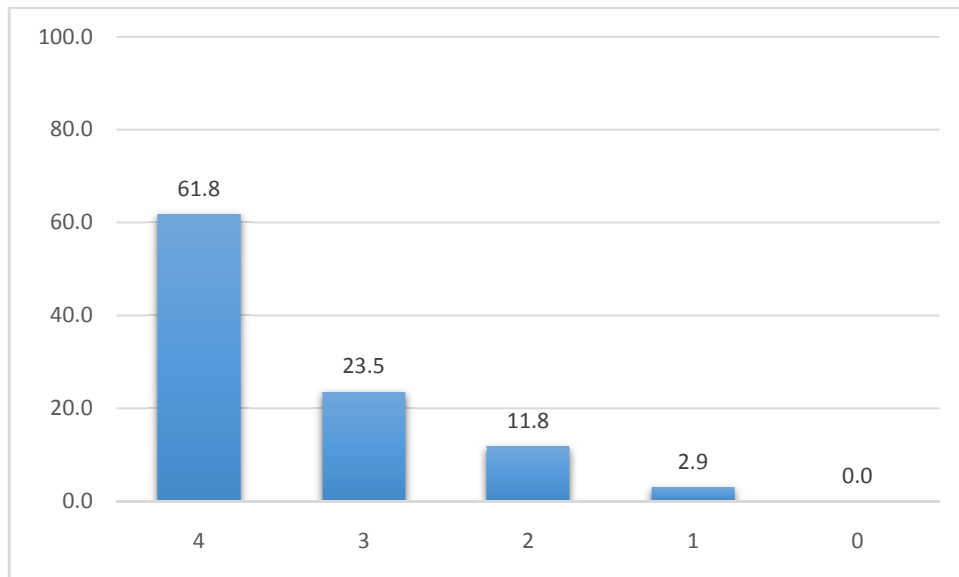
13. How well did the teachers prepare for the classes *

4 –Thoroughly, 3 – Satisfactorily, 2 – Poorly, 1 – Indifferently, 0 – Won't teach at all



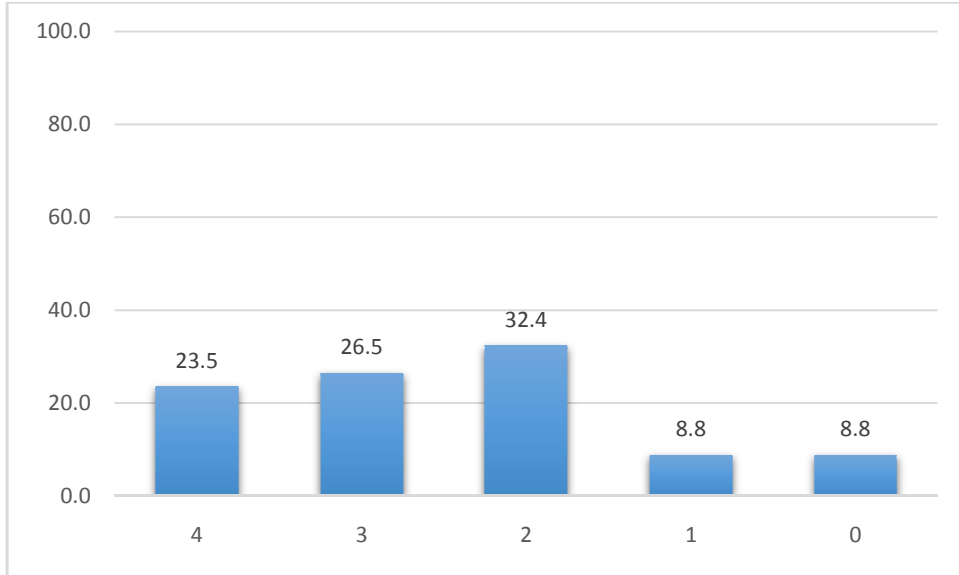
14. How well were the teachers able to communicate? *

4 – Always effective, 3 – Sometimes effective , 2 – Just satisfactorily, 1– Generally ineffective, 0– Very poor communication



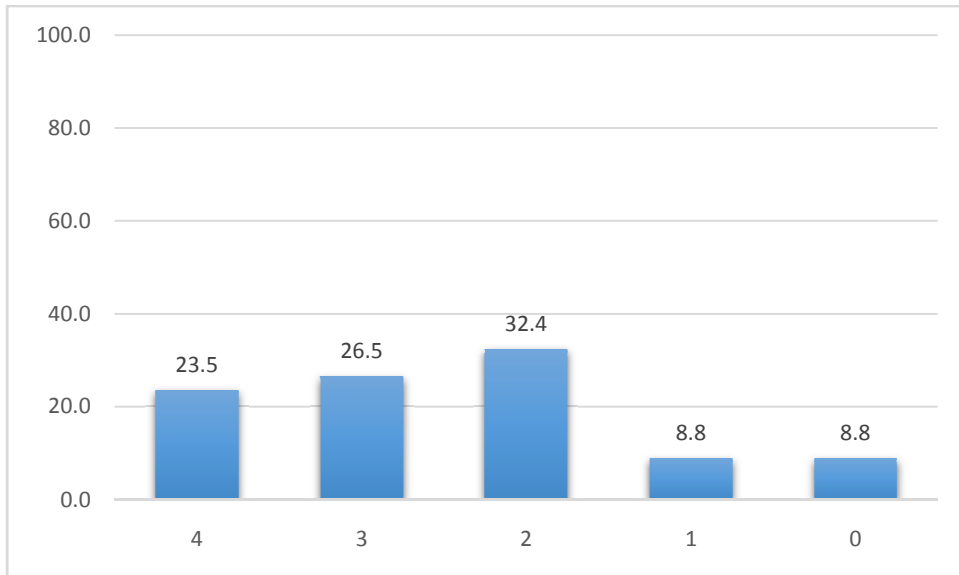
15. The teacher's approach to teaching can best be described as*

4– Excellent, 3 – Very good, 2 – Good, 1 – Fair, 0– Poor



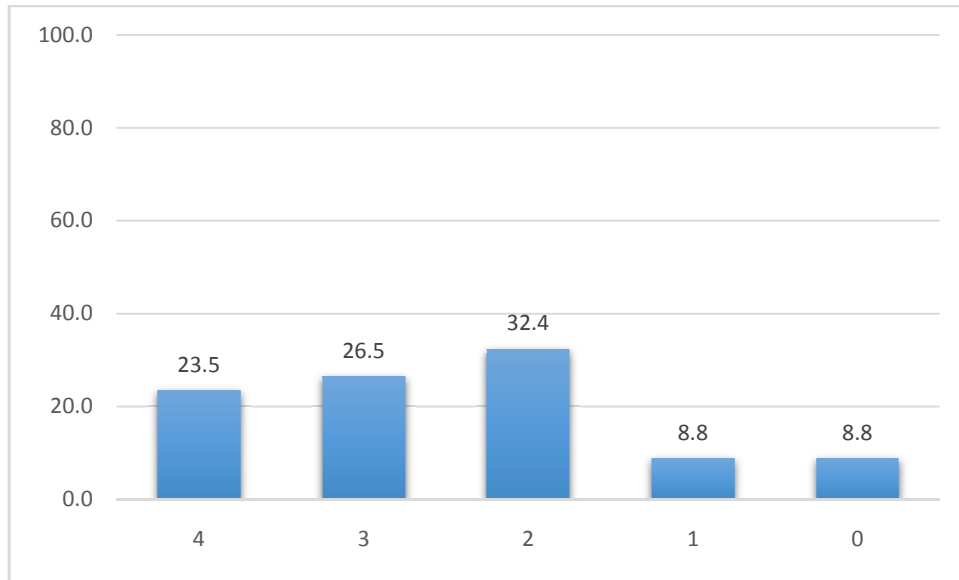
16. Was your performance in assignments discussed with you? *

4 – Every time, 3 – Usually, 2 – Occasionally/Sometimes, 1 – Rarely, 0– Never



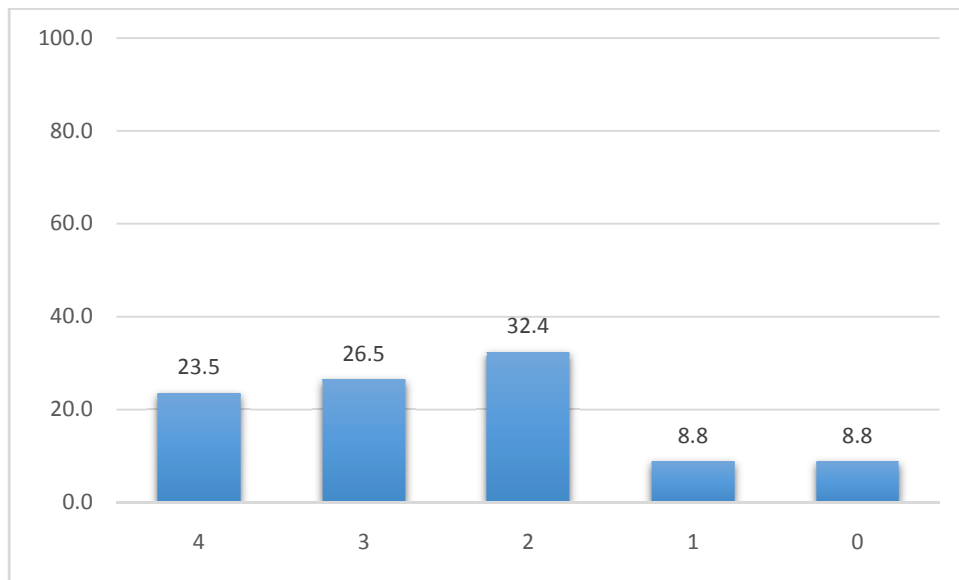
17. Teachers inform you about your expected competencies, course outcomes and programme outcomes *

4 – Every time, 3 – Usually, 2– Occasionally/Sometimes, 1 – Rarely, 0– Never



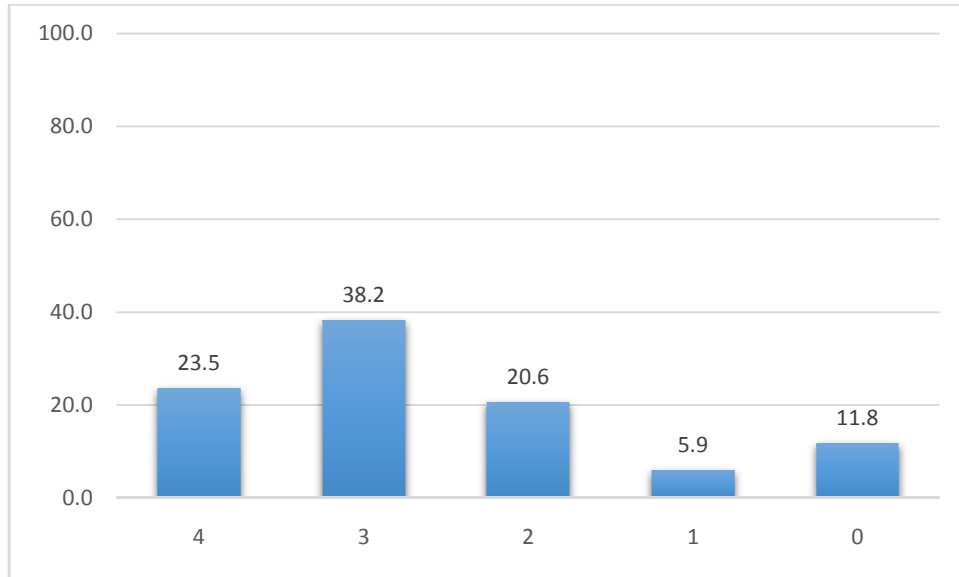
18. The teachers illustrate the concepts through examples and applications *

4 – Every time, 3 – Usually, 2– Occasionally/Sometimes, 1 – Rarely, 0– Never



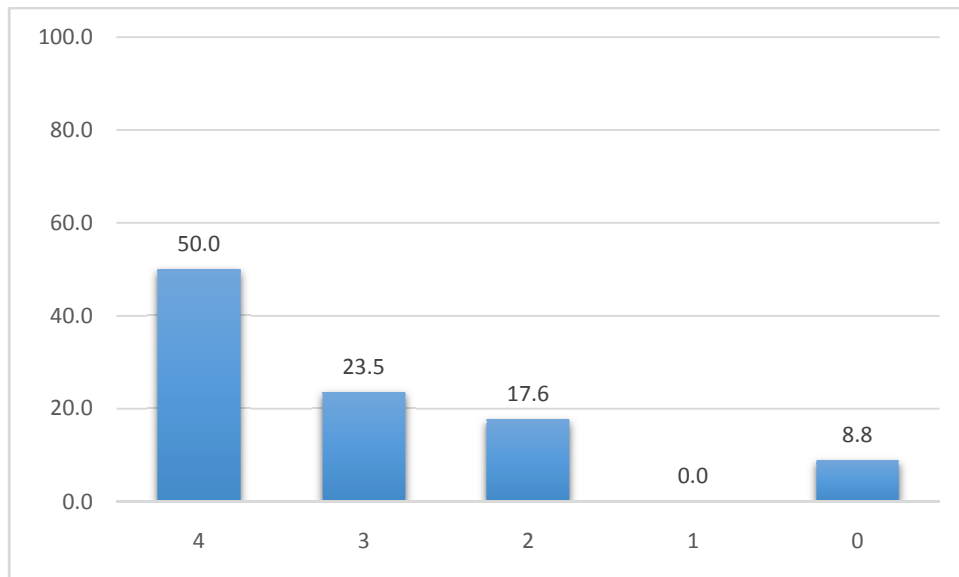
19. The teachers illustrate the concepts through examples and applications *

4 – Every time, 3 – Usually, 2– Occasionally/Sometimes, 1 – Rarely, 0– Never



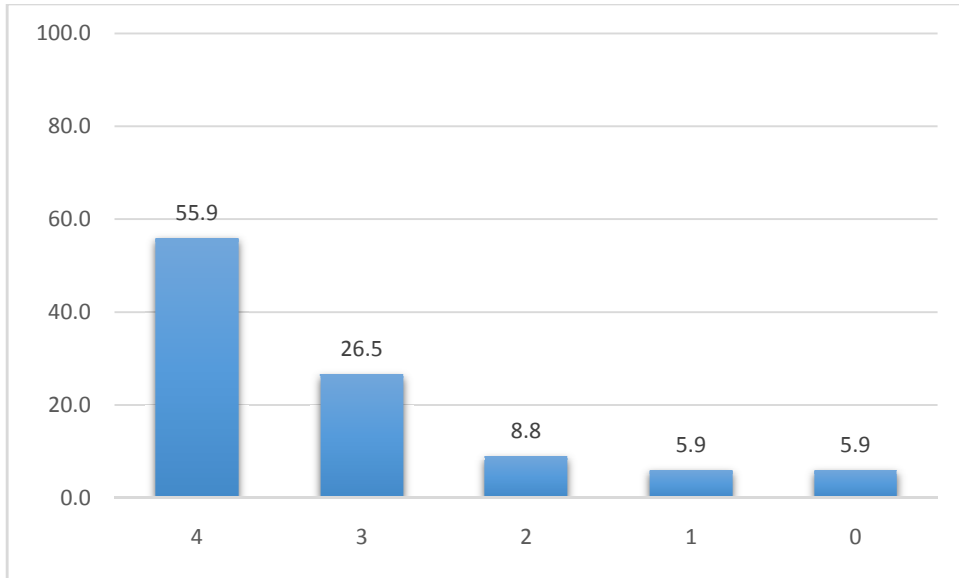
20. Teachers are able to identify your weaknesses and help you to overcome them. *

4 – Every time, 3 – Usually, 2– Occasionally/Sometimes, 1 – Rarely, 0– Never



21. Teachers encourage you to participate in extracurricular activities. *

4 – Strongly agree, 3 – Agree, 2 – Neutral, 1 – Disagree, 0 – Strongly disagree



22. Does the teachers illustrate the concepts through examples and applications? *

4 – Every time, 3 – Usually, 2– Occasionally/Sometimes, 1 – Rarely, 0– Never

